



**c-TECH**AUTOMATION

# C-Tech Automation

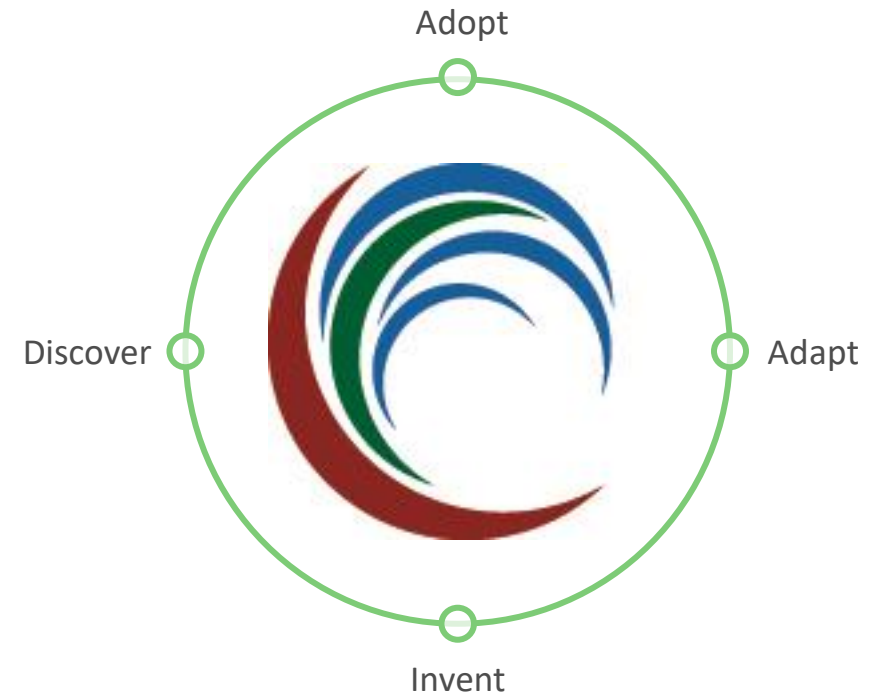
Packhouse Automation – Learning  
from the Chilled Food Industry

Matt Rayment – Chief Engineer

Nov 2021

# C-Tech Automation

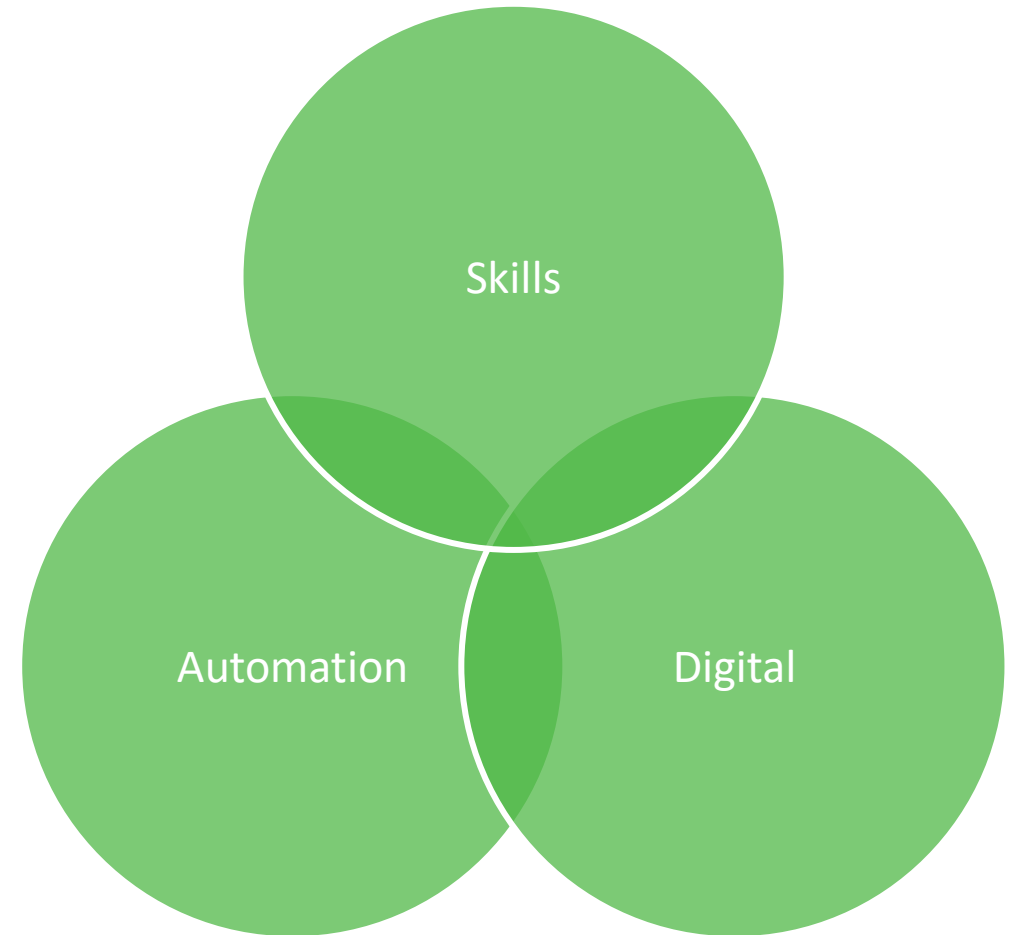
- C-Tech Automation is unique. We are a manufacturing innovation business within the Seafresh Group.
- We're on-site and on-hand to solve and more importantly disrupt the traditional approaches to food manufacturing.
- We are a high-performance engineering and consultancy business looking for applications inside SeaFresh and offering consultancy services to the industry.
- We are working with NPD and our customers to improve success rates when adopting manufacturing technology.



# C-Tech Automation

---

- Our role within the SeaFresh business is to:
  - increase productivity
  - reduce manual product contact
  - increase our depth of data
  - digitally connect our factory-in to factory-out
- Our effect will be an increase in production efficiency, reduction in waste (people, product, process).
- Long-term we want to use C-Tech to inspire a new generation, change the face of food production and drive the uptake of technology through case-studies, show-cases and visits.



**Fundamental Pillars of C-Tech Approach** – Showing the interconnection of key systems that are often disconnected at production sites owing to silo operation.

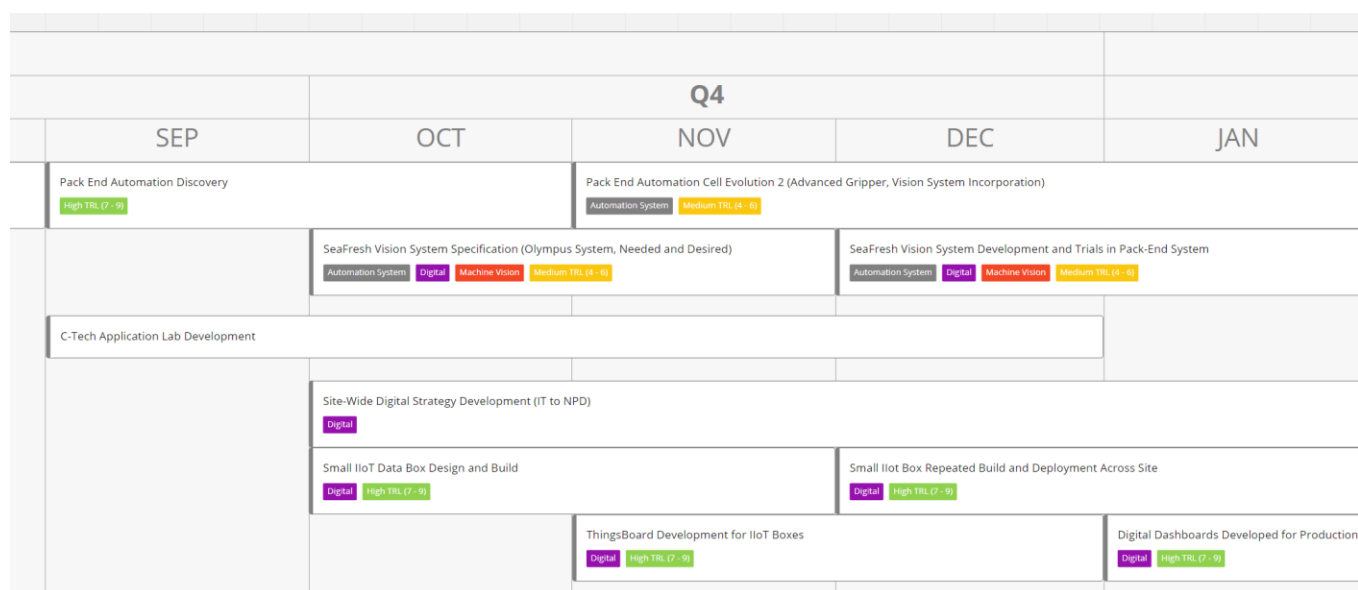
# Lessons Learned (..so far)..

---

- **Plan**
  - Step back and plan where are you headed, what are your current major influencers and what do you think your future challenges will be.
- **Re-discover your processes**
  - Run a 'simple' discovery process on all of your operations, paying particular attention to ones classified as 'we've always done it this way'.
- **Look over the fence**
  - Often the solution you need isn't from your own sector
- **Use TRL**
  - Use a common voice, a simple method of classifying technology and development projects.
- **Run wide**
  - Seek solutions that may not be as effective as your current manual process but can run longer.
- **Find someone who can help**
  - A good designer, system integrator or research partner can transform your ability to change.
- **Start your digital journey ... now**

# C-Tech Automation

- We are templating our approach to technology adoption so we can offer this as a service to others. So far we have:
  - Created process flow diagrams and equipment maps
  - Generated a roadmap linking NPD, IT and Site Engineering Teams current projects
  - Identified opportunities for technology adoption
  - Started road mapping across all teams using a shared and 'common' platform.



Example Image of SeaFresh Technology Roadmap



**C-Tech Project** – Moveable and Collaborative Robotic End-of-Line Packing (*industry first*)



**C-Tech Project** – Machine vision system identifying, locating and checking product date code in real-time



**c-TECH**AUTOMATION

Thank You

Matt Rayment

07703 193676

[mrayment@c-techautomation.com](mailto:mrayment@c-techautomation.com)